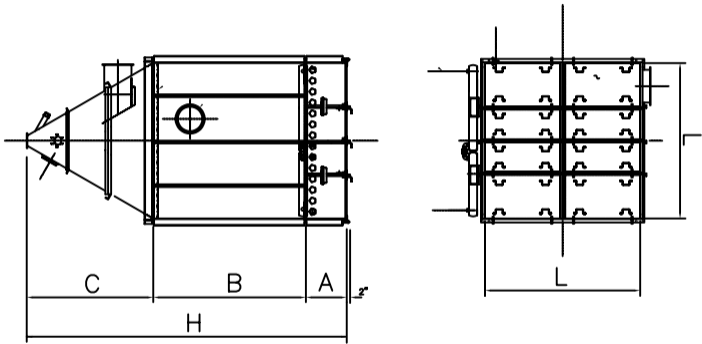


SD-196 SHOWN



MODEL	A	B*	C**	H*	L	FILTER AREA (SQ. FT.)	VALVE SIZE	NO. OF VALVES	COMP. AIR CONSUMPTION (SCFM)
SD-49-60	2'-0"	5'-10"	3'-8"	11'-6"	4'-10"	368	3/4"	7	7.2
SD-49-84	2'-0"	7'-10"	3'-8"	13'-6"	4'-10"	519	3/4"	7	7.2
SD-49-96	2'-0"	8'-10"	3'-8"	14'-6"	4'-10"	598	3/4"	7	7.2
SD-49-120	2'-0"	10'-10"	3'-8"	16'-6"	4'-10"	750	1"	7	12.6
SD-64-60	2'-0"	5'-10"	4'-3"	12'-1"	5'-6"	480	3/4"	8	7.2
SD-64-84	2'-0"	7'-10"	4'-3"	14'-1"	5'-6"	678	3/4"	8	7.2
SD-64-96	2'-0"	8'-10"	4'-3"	15'-1"	5'-6"	781	3/4"	8	7.2
SD-64-120	2'-0"	10'-10"	4'-3"	17'-1"	5'-6"	979	1"	8	12.6
SD-81-84	2'-0"	7'-10"	4'-10"	14'-8"	6'-2"	859	3/4"	9	7.2
SD-81-96	2'-0"	8'-10"	4'-10"	15'-8"	6'-2"	988	3/4"	9	7.2
SD-81-120	2'-0"	10'-10"	4'-10"	17'-8"	6'-2"	1239	1"	9	12.6
SD-81-144	2'-0"	12'-10"	4'-10"	19'-8"	6'-2"	1494	1 1/2"	9	21.0
SD-100-84	2'-0"	7'-10"	5'-5"	15'-3"	6'-10"	1060	1"	10	12.6
SD-100-96	2'-0"	8'-10"	5'-5"	16'-3"	6'-10"	1220	1"	10	12.6
SD-100-120	2'-0"	10'-10"	5'-5"	18'-3"	6'-10"	1530	1"	10	12.6
SD-100-144	2'-0"	12'-10"	5'-5"	20'-3"	6'-10"	1845	1 1/2"	10	21.0
SD-121-84	2'-0"	7'-10"	6'-0"	15'-10"	7'-6"	1283	1"	11	25.2
SD-121-96	2'-0"	8'-10"	6'-0"	16'-10"	7'-6"	1476	1"	11	25.2
SD-121-120	2'-0"	10'-10"	6'-0"	18'-10"	7'-6"	1851	1 1/2"	11	42.0
SD-121-144	2'-0"	12'-10"	6'-0"	20'-10"	7'-6"	2232	1 1/2"	11	42.0
SD-144-84	2'-0"	7'-10"	6'-7"	16'-5"	8'-2"	1526	1"	12	25.2
SD-144-96	2'-0"	8'-10"	6'-7"	17'-5"	8'-2"	1757	1"	12	25.2
SD-144-120	2'-0"	10'-10"	6'-7"	19'-5"	8'-2"	2203	1 1/2"	12	42.0
SD-144-144	2'-0"	12'-10"	6'-7"	21'-5"	8'-2"	2657	1 1/2"	12	42.0
SD-169-84	2'-6"	7'-10"	7'-2"	17'-6"	8'-10"	1791	1"	13	25.2
SD-169-96	2'-6"	8'-10"	7'-2"	18'-6"	8'-10"	2062	1"	13	25.2
SD-169-120	2'-6"	10'-10"	7'-2"	20'-6"	8'-10"	2586	1 1/2"	13	42.0
SD-169-144	2'-6"	12'-10"	7'-2"	22'-6"	8'-10"	3118	1 1/2"	13	42.0
SD-196-84	2'-6"	7'-10"	7'-9"	18'-1"	9'-6"	2078	1"	14	25.2
SD-196-96	2'-6"	8'-10"	7'-9"	19'-1"	9'-6"	2391	1"	14	25.2
SD-196-120	2'-6"	10'-10"	7'-9"	21'-1"	9'-6"	2999	1 1/2"	14	42.0
SD-196-144	2'-6"	12'-10"	7'-9"	23'-1"	9'-6"	3616	1 1/2"	14	42.0

\* DIMENSION INCLUDES GRID. DEDUCT 7" FOR UNITS WITHOUT GRID.

\*\* DIMENSION IS BASED ON 60° SIDE SLOPE & 7 1/2" DISCHARGE OPENING